

# Quick Guide of Pathway Studio 5.0

**Location:** Room 469, Bessey Hall, Bioinformatics Computer Room of Plant Pathology

**Computer:** GeneSpring620.iastate.edu, which hosts GeneSpring and ImaGene.

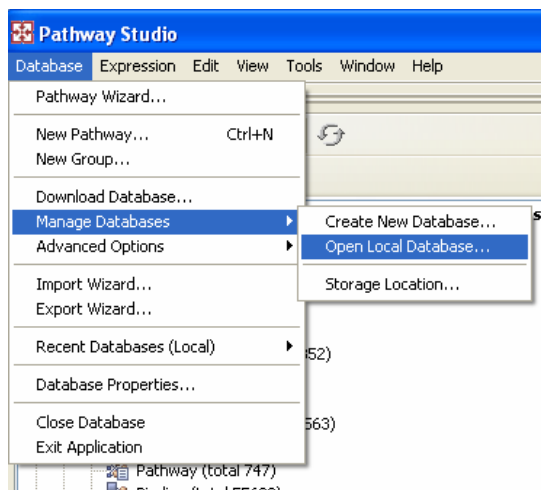
**Contact:** Xuefeng Zhao ([xfzhao@iastate.edu](mailto:xfzhao@iastate.edu))

## 1. To run the application

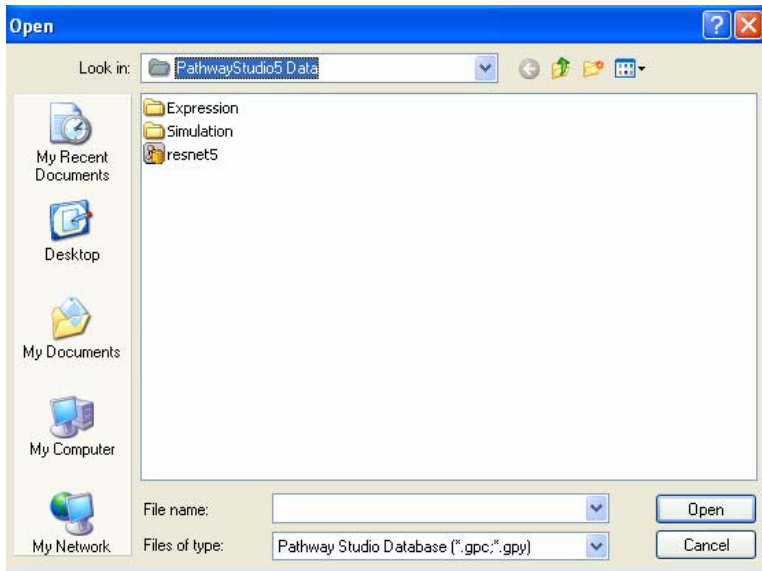
Log in the computer using your ISU NetID, click the icon Pathway Studio 5.0, or execute the program from Start Menu -> All Programs -> Ariadne Genomics -> Pathway Studio 5.0.

## 2 To Connect to the local mammalian MSSQL ResNet 5 Database

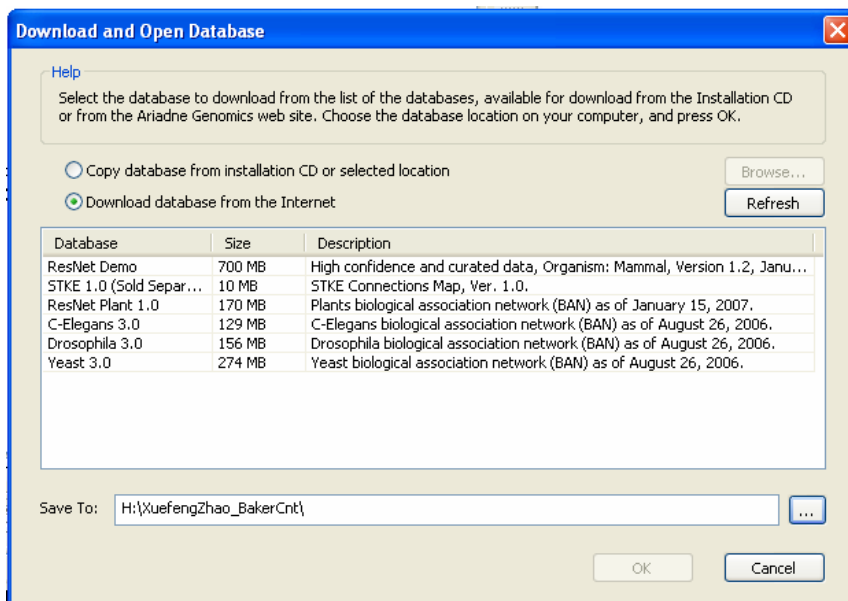
Select the drop-down menu Database: Database -> Manage Database -> Open local Database..



Then, select resnet5.gpy from the “myDocuments\PathwayStudio5 Data\” to open the local ResNet 5 database.



**3. To download the databases of ResNet Plant 1.0, C-Elegans, Drosophila and Yeast**  
Select the drop-down menu: Database -> Download Database. PLEASE SAVE THE DATA IN THE USER DATA DRIVE.



Check the radio button of “Download database from Internet”, select the database(s) you need, and change the *Save-To* location to H: or D: drive (the C:\ drive is the small system drive.). Create a directory on D: \ or H:\ for your pathway databases before you download.

After downloading, the data will be automatically used by Pathway Studio application.  
*STKE 1.0: ISU did not purchase.*

#### **4. MedScan Reader -- Pathway Data Mining tool**

Start the application from Tools ->MedScan Reader from Pathway Studio.

#### **5. Tutorial:**

Local Tutorial: Select the drop-down menu: Help -> Quick Start Guide

Online Tutorial: <http://www.ariadnegenomics.com/support/tutorials/>

#### **6. Live Online Demonstration:**

<http://www.ariadnegenomics.com/support/webinars/>

#### **7. User Manuals:**

Local pdf manuals: Select the drop-down menu: Help -> Manual...

Online manuals:

<http://www.ariadnegenomics.com/support/downloads/documentation/>